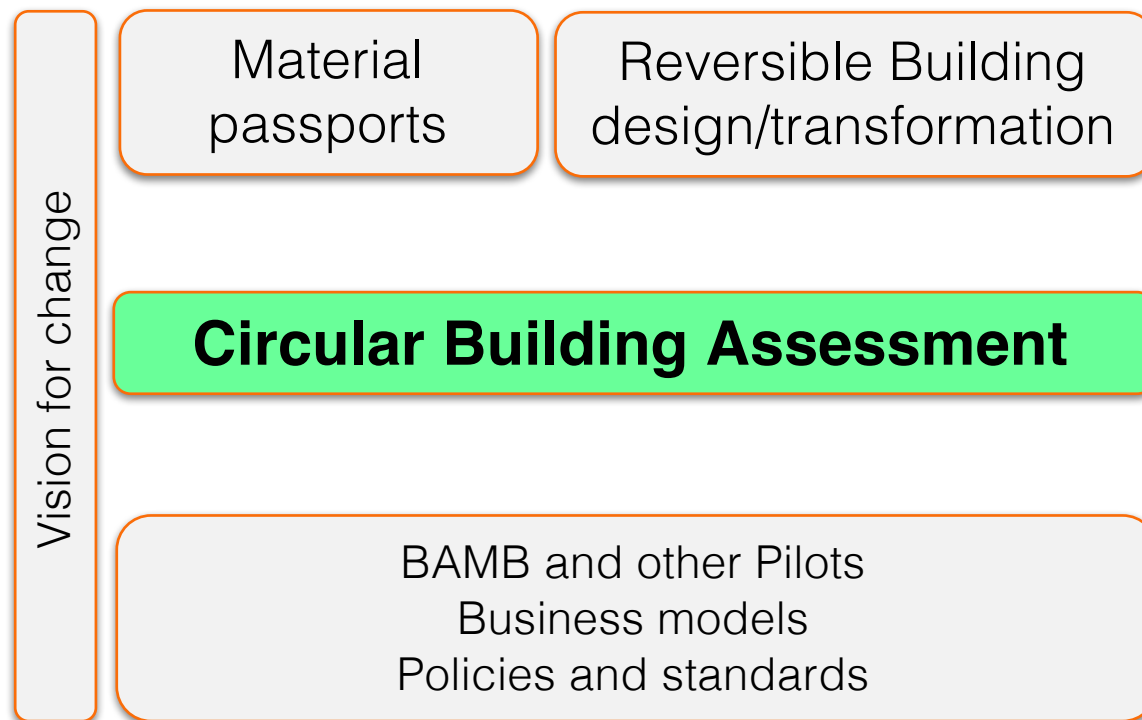




BAMB OVERVIEW – KEY ELEMENTS

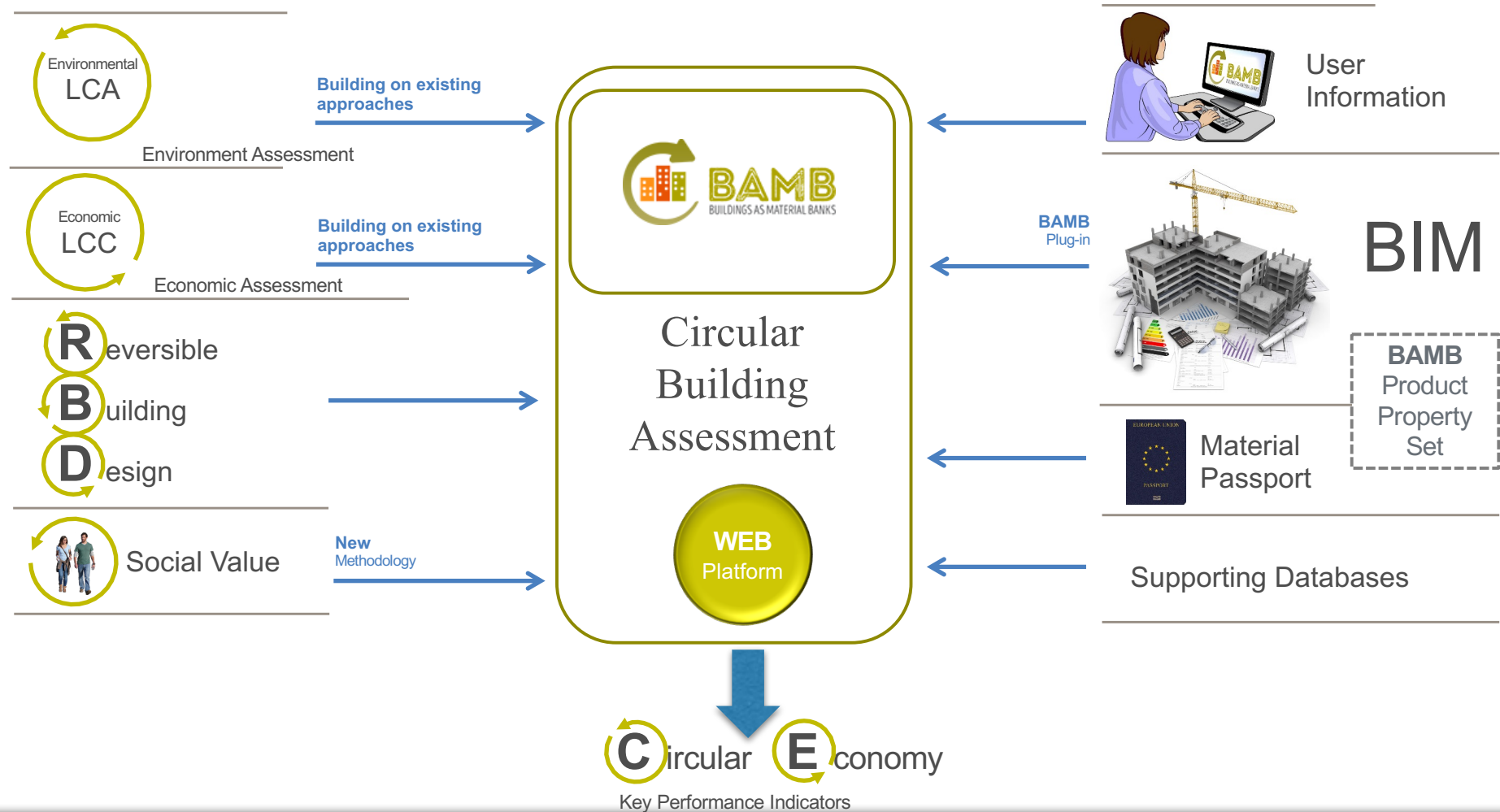


Buildings As Material
Banks

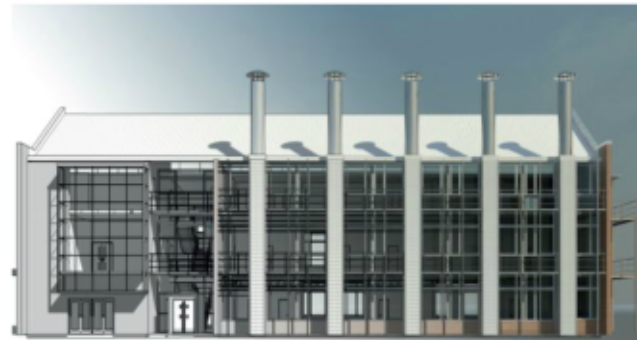


September 2015 to
February 2019

CIRCULAR BUILDING ASSESSMENT - OVERVIEW



CIRCULAR BUILDING ASSESSMENT – USER INTERFACE



<Room Schedule>			
Number	Level	Name	Area
001	Ground	Open Plan Off	361 m²
002	Ground	Office 2	13 m²
003	Ground	Office 3	13 m²
004	Ground	Office 4	13 m²
005	Ground	Office 5	13 m²
006	Ground	Office 6	13 m²
007	Ground	Office 7	13 m²
008	Ground	Lift	4 m²
009	Ground	Reception Hall	164 m²
010	Ground	Kitchen	16 m²
011	Ground	Lobby	3 m²
012	Ground	Store	2 m²
013	Ground	Room	5 m²
014	Ground	Plant Rooms	17 m²
015	Ground	Entrance Lobb	54 m²
016	Ground	WC	15 m²
017	Ground	WC	22 m²
018	Ground	Disabled WC	5 m²
019	Ground	Store	11 m²
020	Ground	Room	11 m²
021	Ground	Store	5 m²
022	Ground	Room	3 m²
023	Ground	Lecture Thea	139 m²
024	Ground	Store	18 m²
025	Ground	Lobby	5 m²
026	Ground	Room	5 m²
027	Ground	Escape Stair	28 m²



Roof Structure

Roof Tiles

External Walls

Windows

Upper floor Types

Internal Partitions

Ground Floors

Circularity Indicators

896	Cost – Unit: £/m² GIA
52%	Embodied Carbon [stage A1-A3] - Unit: kg CO ₂ e/m²
67%	Reclaimed Content
7.24	Recycled Content
60	Reuse Potential/ RBD score
5.75	Service Life – Unit: years
6.24	Transformation capacity
	Recyclability

Coming soon!