

ReLondon

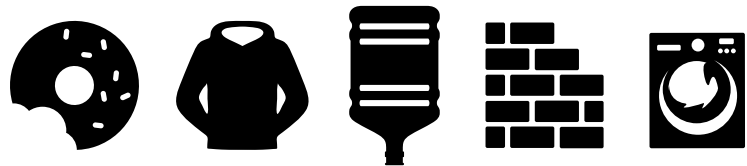
**Revolutionising
our relationship
with stuff**

Our vision is of a future without waste, where the way we make, consume and dispose of stuff actively tackles the climate crisis and protects our planet.

We will make London a global leader in sustainable ways to live, work and prosper, by revolutionising our relationship with stuff and helping London waste less and reuse, repair, share and recycle more.



Helping London respond to the climate crisis



Empowering a shift
to circular thinking

Advocating for
systems change

Encouraging shifts in
mindsets and behaviour

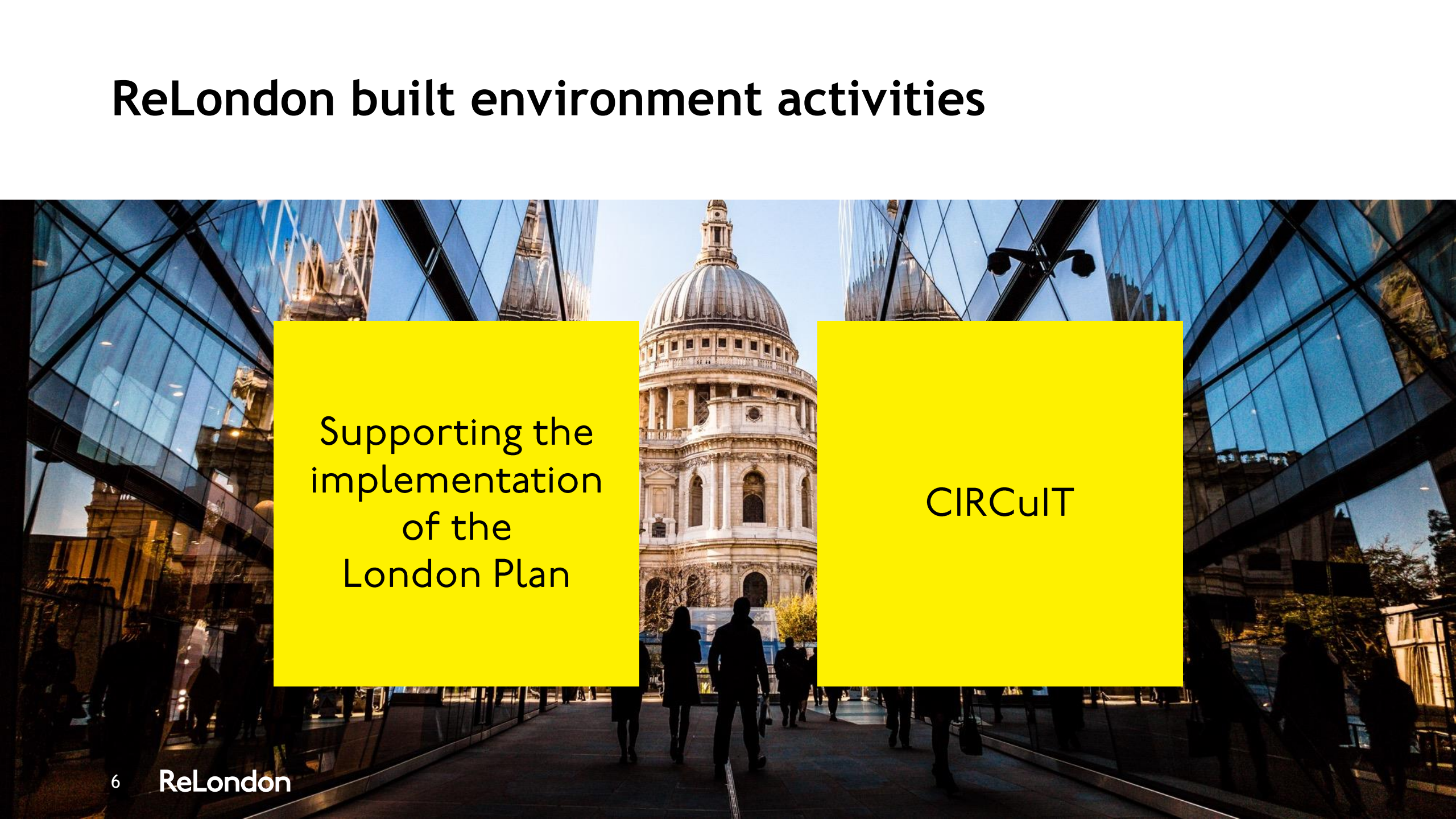
Cities are the engine rooms of the circular economy

The Mayor
and London's
boroughs

Businesses

Citizens

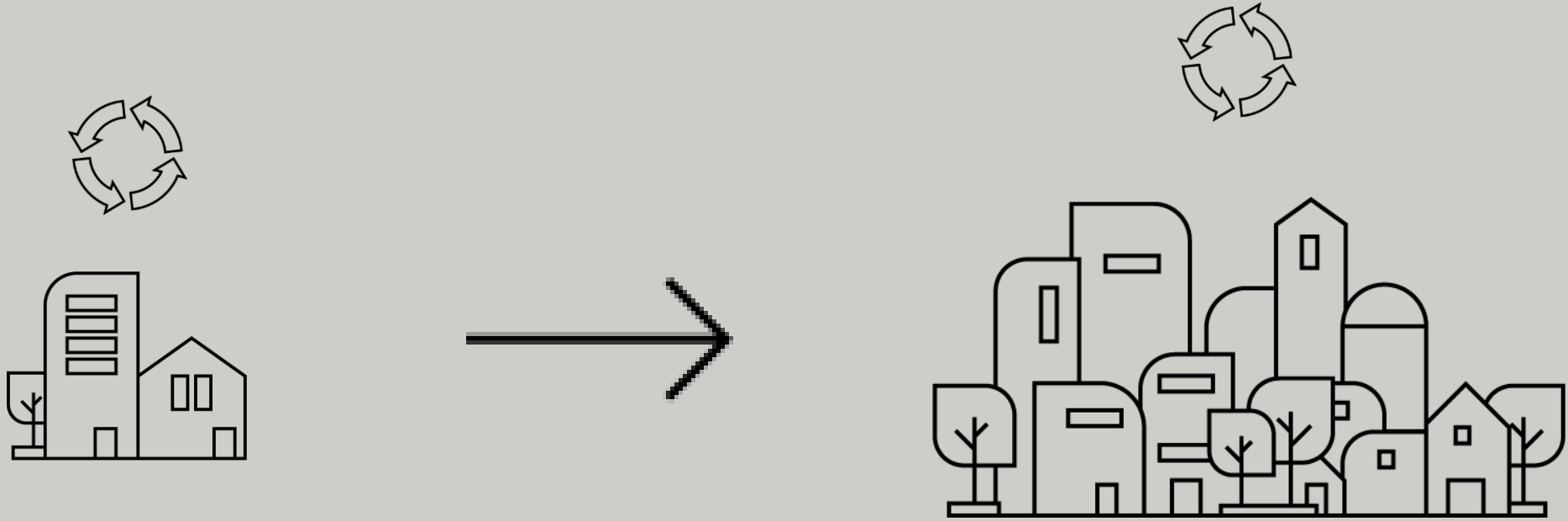
ReLondon built environment activities

A photograph of St Paul's Cathedral in London, viewed through the glass facade of a modern skyscraper. The cathedral's dome is the central focus, with its classical architecture contrasting with the contemporary glass and steel structure. The scene is captured from a low angle, looking up at the cathedral through the building's framework. Two yellow rectangular boxes are overlaid on the image, containing text.

Supporting the
implementation
of the
London Plan

CIRCuiT

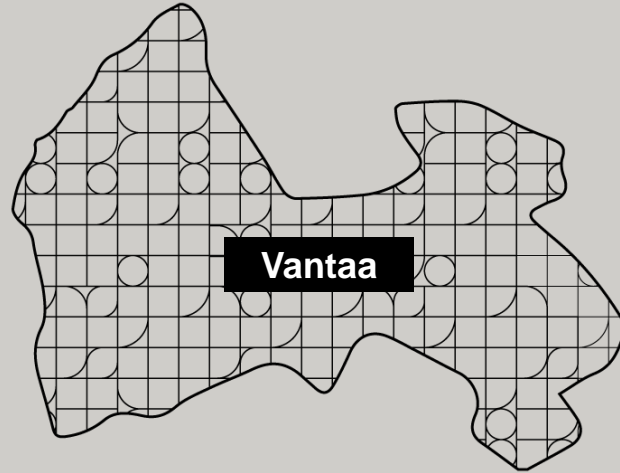
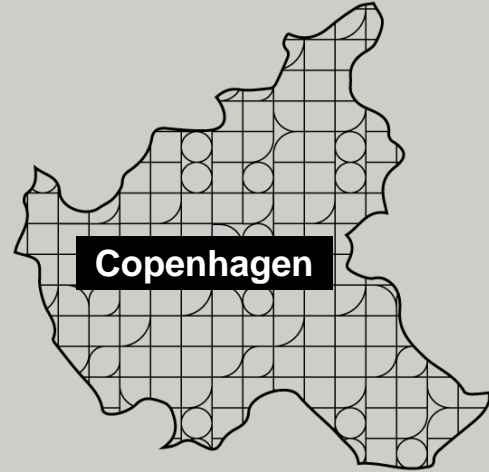
CIRCUIT



**Reduce
virgin
material
20%**

**Cost
savings
15%**

**Carbon
emissions**



Our Leading Partners

ReLondon



Our Supporting Partners

ARKITEMA ARCHITECTS



IFHP



Imperial College London



GRIMSHAW

Vandkunsten Architects



GREATER LONDON AUTHORITY

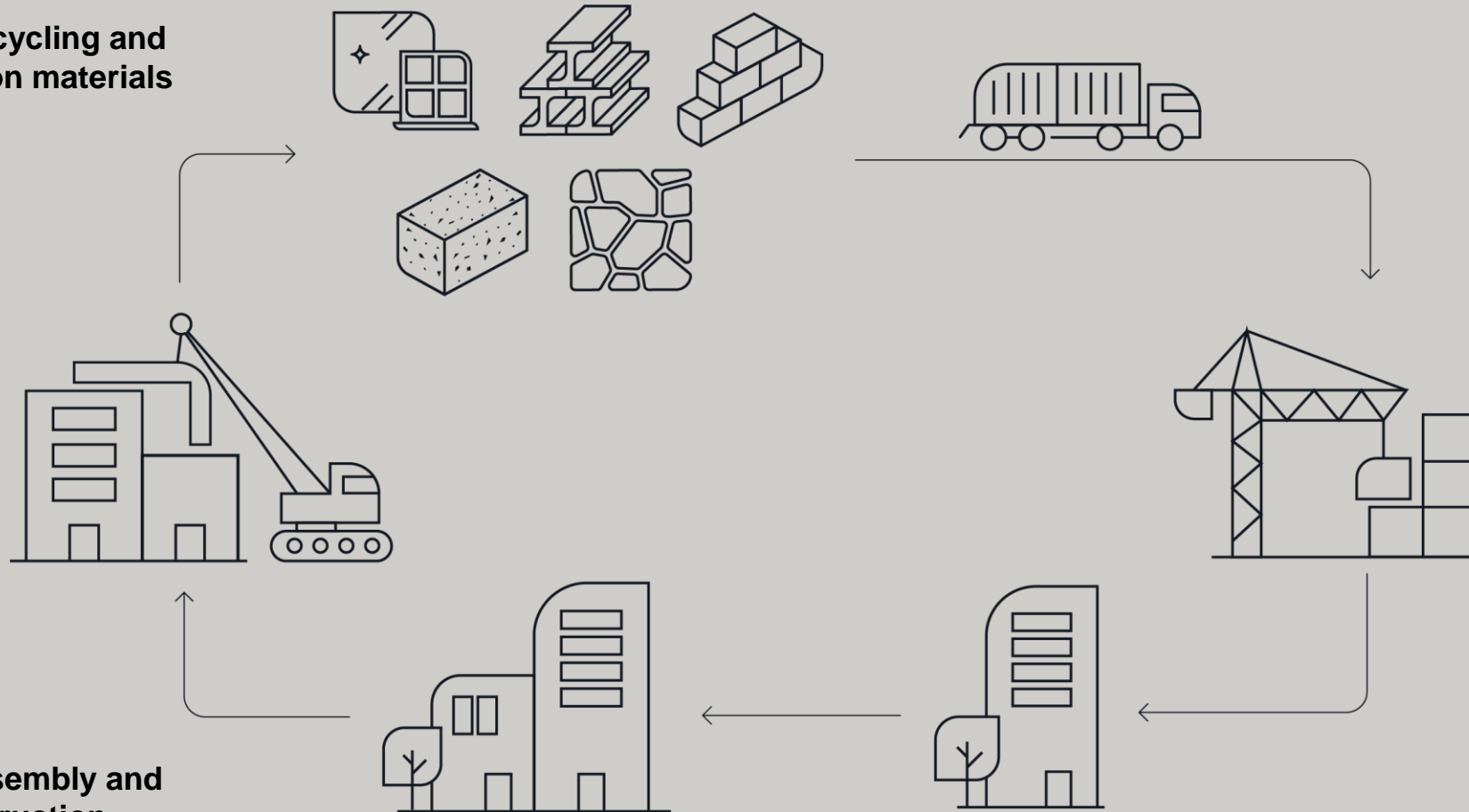
CLEAR VILLAGE



maiker



Urban mining: recycling and reuse of demolition materials



Design for disassembly and flexible construction

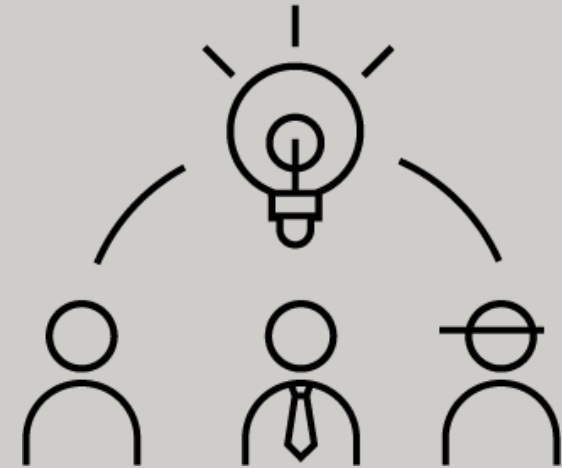
Transformation and life extension of existing buildings



Data & digital tools



Policy & governance



Networking & training

Indicators

Material outflows & recirculation:

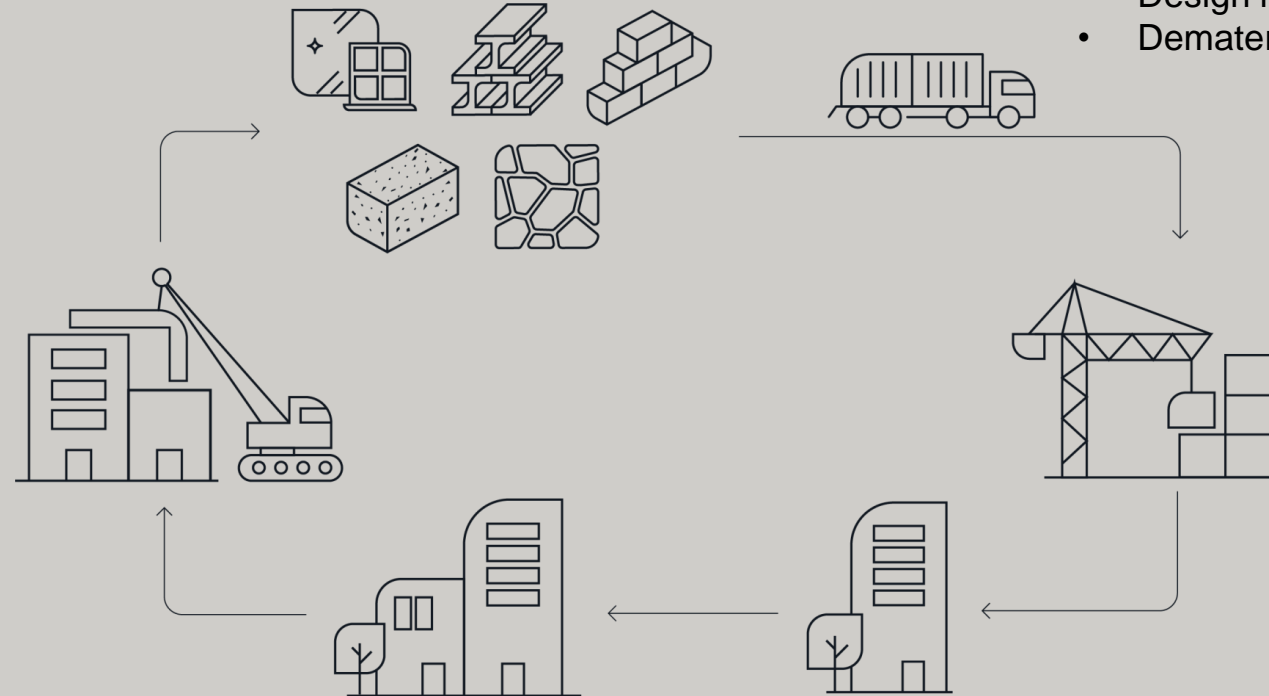
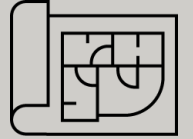
- Total material arisings (whole life)
- Proportion recycled, remanufactured and reused
- Residual value

Material inputs:

- Recycled content
- Reused content

Design:

- Design for disassembly
- Design for adaptability
- Dematerialisation



Circular potential:

- Reuse potential
- Recycling potential
- Transformation capacity

Lifespan:

- Intensiveness of use

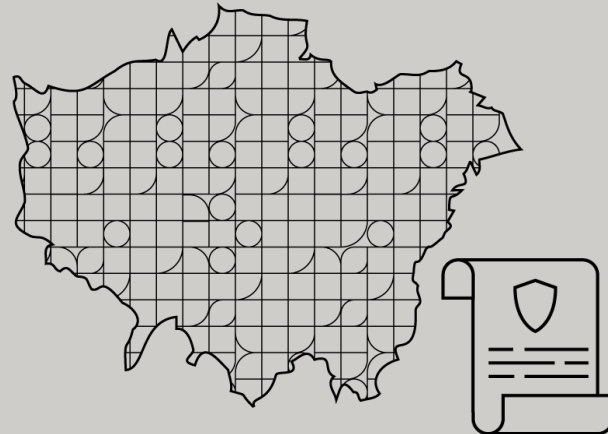
Drivers of demolition



Short-term return on investment



Building characteristics



Location factors

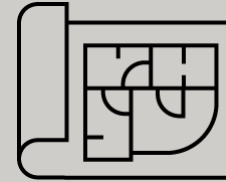


Market trends

Planning policy



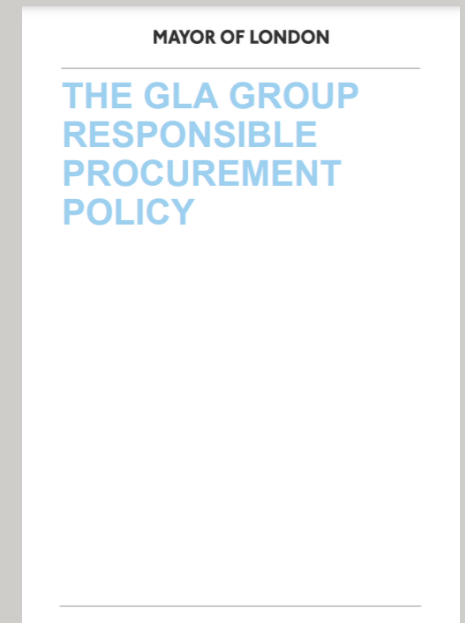
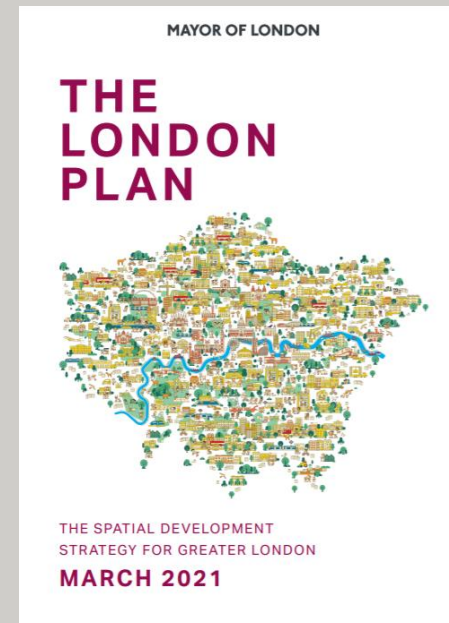
Strategies and roadmaps



Legislative and regulatory instruments

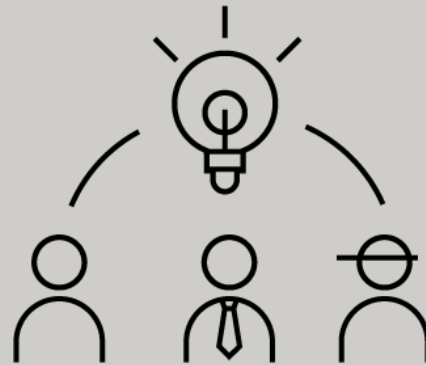


Fiscal instruments and public procurement

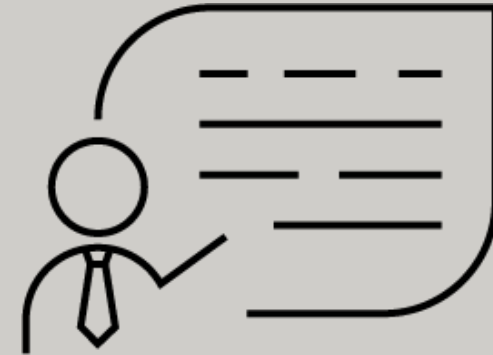




Demonstrators



wiki



**Webinars, events
and hackathons**

Contact

Email: andrea.charlson@relondon.gov.uk

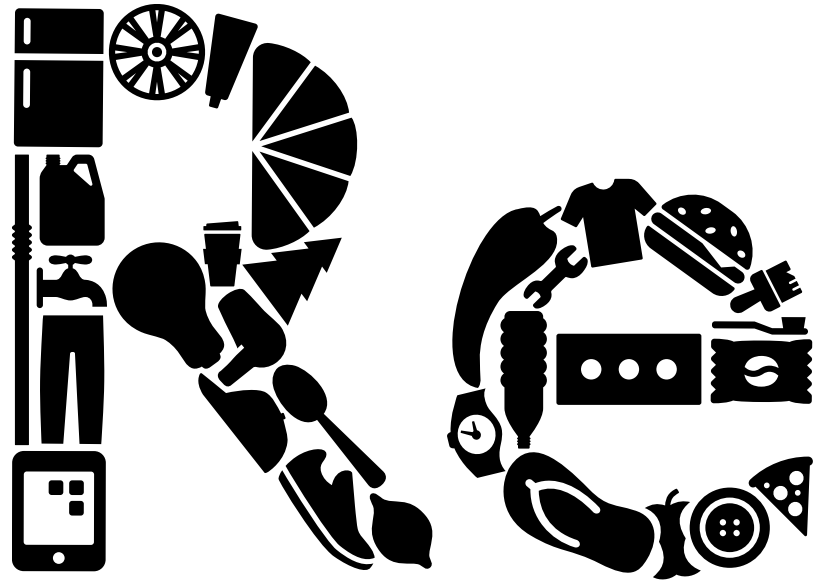
CIRCuIT website: <https://www.circuit-project.eu/>

CIRCuIT on Twitter: [@CIRCuITH2020](https://twitter.com/CIRCuITH2020)

CIRCuIT on LinkedIn: **CIRCuIT - Circular Construction**



This project has received funding from the European Union's Horizon 2020 research and innovation programme under grant agreement No 821201.



ReLondon

Let's get to work

Find us at:

ReLondon.gov.uk

 **@ReLondon_UK**

 **ReLondon**

**For further information
please contact:**

hello@relondon.gov.uk